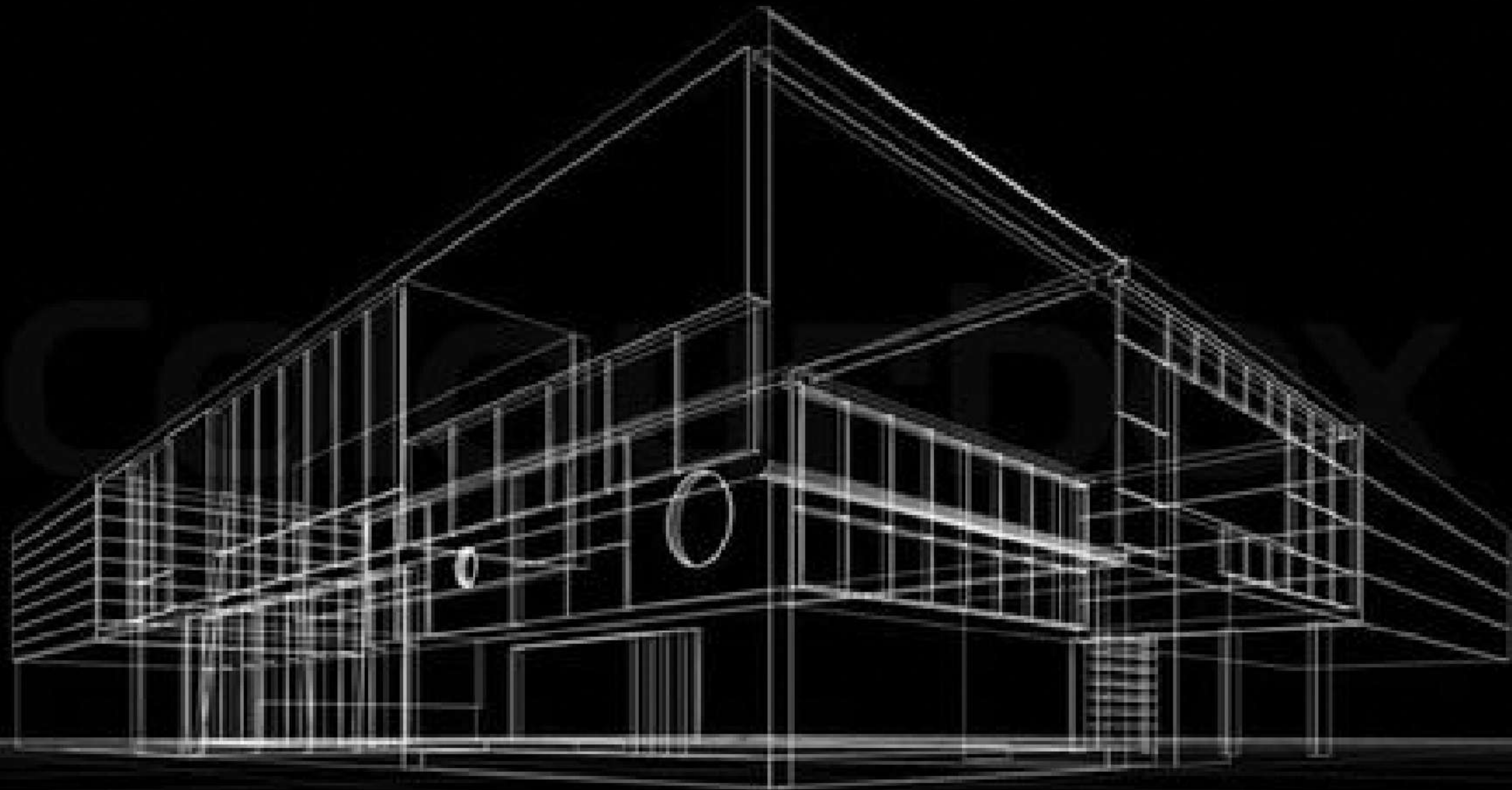




**"We create happy homes"**



# ARCHITECTURAL PORTFOLIO

**15**  
YEARS IN  
SERVICE

**5000+**  
TURNKEY  
PROJECTS

**4** AWARDS  
NATIONAL  
&  
INTERNATIONAL

[www.monnaie.in](http://www.monnaie.in) | [www.grihaabuilders.com](http://www.grihaabuilders.com)



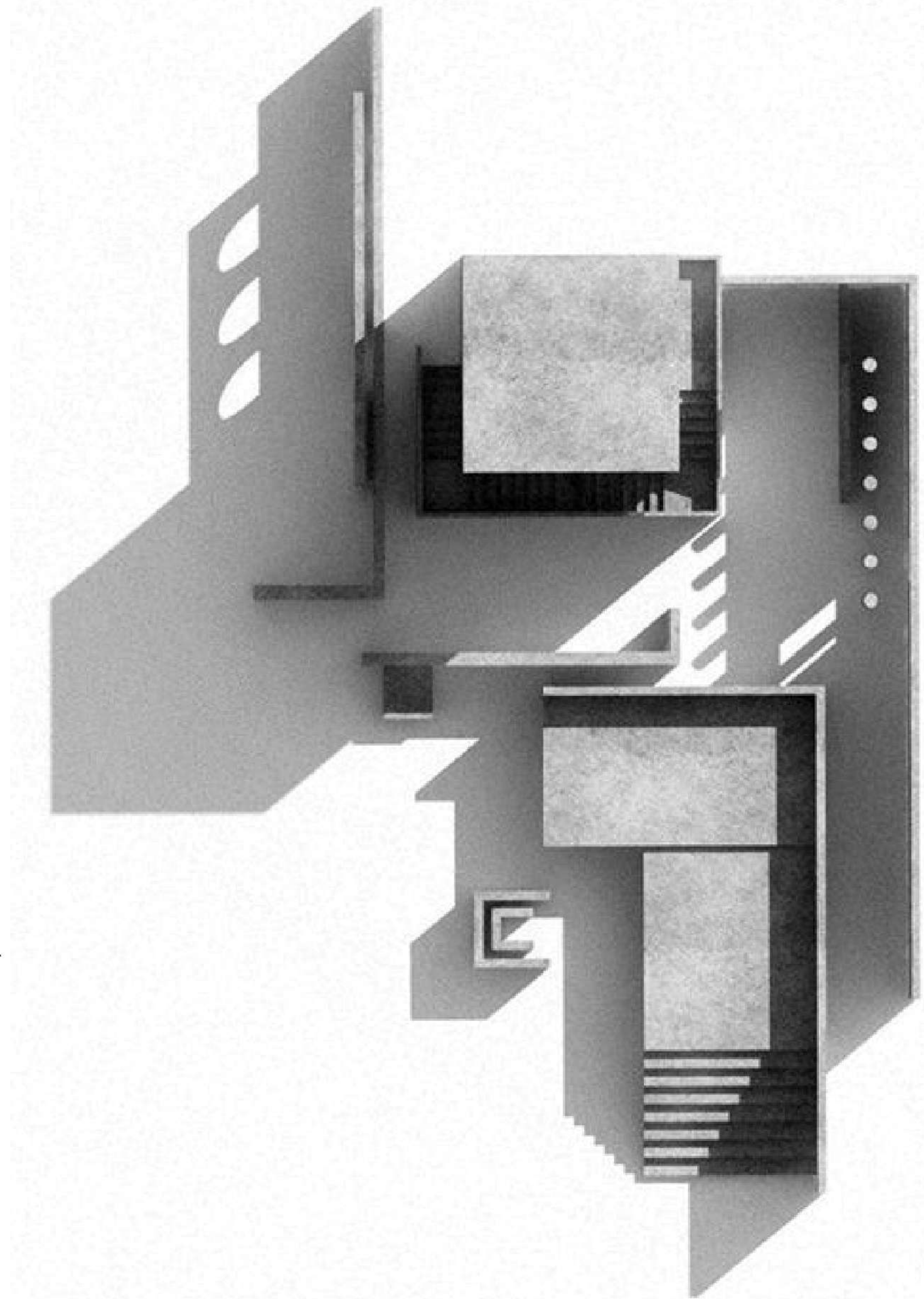
# OUR SERVICES



- Dedicated design team including Architects, Interior Designers and Engineers.
- Quality assured.
- Own factory, automated machineries and skilled man power.
- International standard construction.
- Customer centric approach



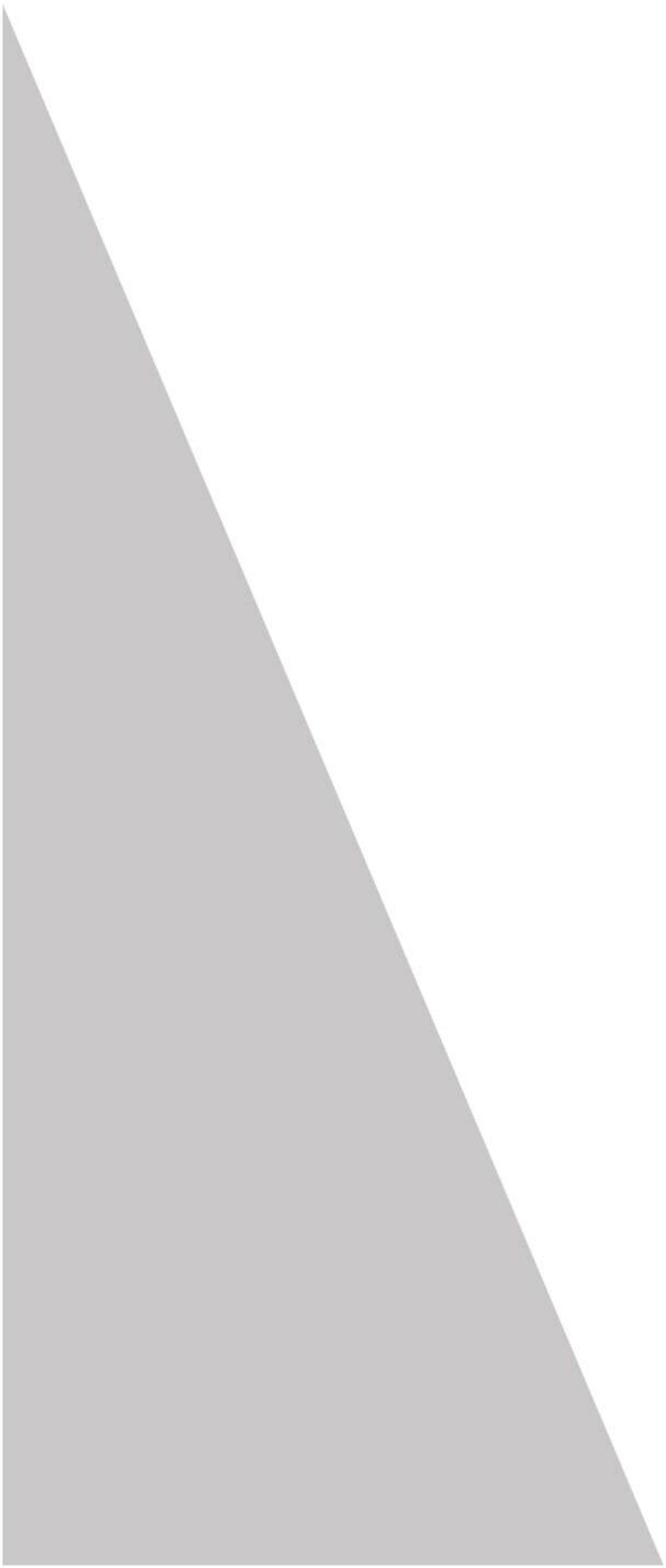
RENDER V/S REAL  
CONTEMPORARY  
MODERN  
RENAISSANCE  
TRADITIONAL  
TROPICAL  
VICTORIAN  
ARCHITECTURAL PACKAGE







# RENDER *VERSUS* REAL





REAL

ESTATE





REAL ESTATE





REALTOR

REAL





REAL ESTATE

REAL ESTATE









Contemporary elevation design typically embodies sleek lines, geometric shapes, and a focus on simplicity and functionality. It often incorporates modern materials such as glass, steel, and concrete, creating a minimalist yet visually striking aesthetic. Clean facades, large windows, and open spaces characterize contemporary elevations, promoting natural light and a connection with the surrounding environment. Integration of sustainable features like green roofs or solar panels is common, reflecting a commitment to eco-friendly design principles. Overall, contemporary elevation design prioritizes a harmonious blend of form and function, embracing innovation while maintaining a timeless appeal.



# SHILASH

4700 sq.ft  
PALAKKAD





# AVADESH KUMAR

4400 sq.ft  
PALAKKAD





# VINEETH DAS

3500 sq.ft  
PALAKKAD





# CONTEMPORARY

## RAKESH

2800 sq.ft  
OLAVAKODE





# SAYED ALI

7500 sq.ft  
NAGERCOIL









Modern elevation design is characterized by clean lines, minimalist aesthetics, and a focus on functionality. It often features sleek geometric shapes, large windows, and open floor plans, creating a sense of spaciousness and light. Materials such as glass, steel, and concrete are commonly used to achieve a contemporary look, with an emphasis on simplicity and sophistication. Modern elevations often incorporate innovative technology and sustainable features, reflecting a commitment to efficiency and environmental responsibility. The overall result is a stylish and streamlined facade that exudes elegance and timeless appeal.



# HARI IYER

3000 sq.ft  
OLAVAKODE





# MODERN

**MATHEW**

4800 sq.ft  
PALAKKAD





# MANU KRISHNA

8000 sq.ft  
OTTAPALAM







Renaissance elevation design is marked by grandeur, symmetry, and classical influences. Inspired by the architecture of ancient Rome and Greece, Renaissance buildings feature ornate facades adorned with columns, arches, and decorative detailing. Symmetrical layouts and harmonious proportions create a sense of balance and order, while elaborate cornices, pilasters, and friezes add richness and texture. Turrets, domes, and pediments often punctuate the skyline, evoking a sense of majesty and power. Materials such as stone, marble, and brick are meticulously crafted to showcase craftsmanship and prestige. Renaissance elevation design reflects an appreciation for classical ideals of beauty, proportion, and humanism, enduring as a symbol of cultural sophistication and artistic achievement.



# NIXON THOMAS

9500 sq.ft  
ERNAKULAM





# LAKSHMAN

25000 sq.ft  
KOLLAM





# TRADITIONAL

Traditional elevation design embodies a timeless aesthetic characterized by symmetry, balance, and understated elegance. Drawing from architectural styles rooted in history and cultural heritage, traditional designs often feature pitched roofs, symmetrically placed windows, and classical detailing such as moldings and columns. Materials like brick, stone, or wood are commonly used to evoke a sense of warmth and durability. Traditional elevations prioritize harmony with their surroundings and often convey a sense of familiarity and comfort, making them enduring choices for homes and buildings.



# ANITHA GIREESH

3000 sq.ft  
PALAKKAD





# ROY

4000 sq.ft  
CALICUT





# TRADITIONAL

## DR. NANDA KUMAR

5600 sq.ft  
PALAKKAD





Tropical elevation design embraces the natural environment, blending indoor and outdoor spaces seamlessly. Characterized by open floor plans, expansive verandas, and abundant greenery, tropical elevations prioritize ventilation, natural light, and a connection with nature. Architectural elements like sloping roofs, overhanging eaves, and louvered windows help to mitigate heat and promote airflow, while also adding visual interest. Materials such as bamboo, wood, and thatch are commonly used to create a sense of warmth and authenticity. Vibrant colors, textured surfaces, and playful patterns often evoke the lively spirit of tropical landscapes. Overall, tropical elevation design fosters a relaxed and inviting atmosphere, celebrating the beauty of the natural world.



# RAKESH

2400 sq.ft  
PALAKKAD





# DHANU MATHEW

5300 sq.ft  
PATHANAMTHITTA





# MURALI

3800 sq.ft  
THRISSUR





# SASIKUMAR

4000 sq.ft  
PALAKKAD









Victorian elevation design is characterized by elaborate ornamentation, intricate details, and asymmetrical facades. Inspired by the Victorian era, which spanned the reign of Queen Victoria in the 19th century, these designs often feature steeply pitched roofs, vibrant color schemes, and decorative trim work such as gingerbread trim, spindles, and intricate fretwork. Tall windows with decorative surrounds, bay windows, and towers or turrets are common elements, adding to the grandeur and complexity of the design. Victorian elevations often reflect a sense of opulence and individuality, showcasing the craftsmanship and creativity of the era.



**MANOJ**

4200 sq.ft  
PATTAMBI





# JAGADHEESHAN

4000 sq.ft  
PALAKKAD





# BASANTH

4400 sq.ft  
ALAPPUZHA





# SREELEKHA

3159 sq.ft  
PALAKKAD





# ARCHITECTURAL PACKAGE

PLAN + ELEVATION + COST ESTIMATION

1800 SQ.FT - 2000 SQ.FT	-	RS.40,000 + GST
2001 SQ.FT - 4000 SQ.FT	-	RS.60,000 + GST
> 4000 SQ.FT	-	RS.1,00,000 + GST







LUXURY ARCHITECTURAL PACKAGE

SITE VISIT & CLIENT MEET

SCHEME PLAN  
(Five time editing free)

SITE PLAN

EXTERIOR DESIGN VIEWS  
(4 Views) (One time editing free)

LANDSCAPE DESIGN VIEWS  
(1 View) (Compound wall & Gate only)

APPROVAL DRAWING

SET OUT PLAN

FOOTING LAYOUT

FOOTING CROSS SECTION DETAILS

COLUMN CENTER LINE LAYOUT

COLUMN CROSS SECTION DETAIL

PLINTH BEAM LAYOUT

PLINTH BEAM CROSS SECTION DETAIL

PLINTH BEAM TYPICAL LONGITUDINAL  
SECTION DETAIL

LINTEL & SUNSHADE LAYOUT

TYPICAL LINTEL & SUNSHADE CROSS  
SECTION DETAIL

BEAM LAYOUT

BEAM CROSS SECTION DETAIL

BEAM TYPICAL LONGITUDINAL SECTION  
DETAIL

ROOF SLAB LAYOUT & SCHEDULE OF  
REINFORCEMENT

ROOF SLAB TYPICAL CROSS SECTION DETAIL

TYPICAL STAIRCASE DETAIL

SEPTIC TANK CROSS SECTION DETAIL

WORKING DRAWING PLAN

ELEVATION DRAWING

SECTION DRAWING

JOINERY LAYOUT & DETAIL

OTHER DETAIL DRAWINGS

SUPERVISION

INTERIOR LAYOUT

INTERIOR VIEWS  
(One time editing free)

FLOORING LAYOUT

PLUMBING LAYOUT

PLUMBING PIT DETAIL & LOCATION LAYOUT

ELECTRICAL DRAWING

ELECTRICAL LOOPING DRAWING

CCTV DRAWING

CIVIL WORK ESTIMATE

Rs.200 + GST (per sqft)



# LUXURY ARCHITECTURAL PACKAGE

FALSE CEILING LAYOUT

CEILING LIGHTING LAYOUT

FURNITURE LAYOUT

FURNITURE ELEVATION DRAWING

FURNITURE SECTION DRAWING

PAINT LAYOUT

FURNISHING ESTIMATE

SUPERVISION

## PAYMENT TERMS

INITIAL PAYMENT	-	20% OF SERVICE COST
2ND PAYMENT	-	20% OF SERVICE COST
3RD PAYMENT	-	15% OF SERVICE COST
4TH PAYMENT	-	15% OF SERVICE COST
5TH PAYMENT	-	20% OF SERVICE COST
6TH PAYMENT	-	10% OF SERVICE COST

Rs.200 + GST (per sqft)





# REACH US

First Floor  
Deepam Foundation,  
Manapullikkavu,  
Palakkad - 678013,  
Kerala, India

enquiry@monnaie.in

+(91) 9625080808

Monday - Saturday 9.30am to 18.00pm

<https://www.instagram.com/monnaiegroup/>  
<https://www.youtube.com/user/Monnaie100>  
<https://in.pinterest.com/monnaiearchitectsandinteriors/>  
<https://www.facebook.com/monnaie.in>

